

TECHNICAL PARTICULARS

MECHANICAL VALUES

Bending strength (Upright & under hung)	lb	2600	kN	11.56
Compression strength	lb	75000	kN	334
Tensile strength	lb	25000	kN	111
Torsional strength	in lb	90000	kNm	10.17

ELECTRICAL VALUES

Dry power frequency withstand voltage	kV	280		
Wet power frequency withstand voltage	kV	230		
Dry power frequency flashover voltage	kV	305		
Wet power frequency flashover voltage	kV	255		
Lightning impulse withstand voltage	kVp	550		
Impulse flash over voltage	kVp	610		
Min. creepage distance	Inch	99	mm	2515
Net Weight (approx.)	lbs	143	kgs	65

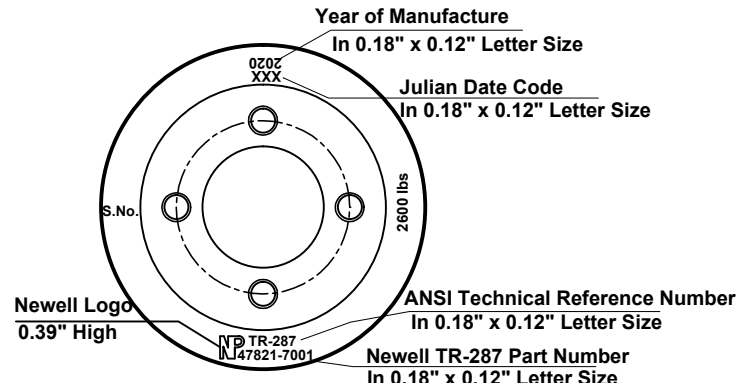
Shed profile as per IEC : 60815

RADIO INFLUENCE VOLTAGE DATA

Test voltage to ground	kV	73
Max. RIV at 1000 kHz	µV	200

NOTE: -

Test & tolerance as per ANSI : C 29.9 & C29.1



Marking at top shed

2	Caps	MCI / SGI	Hot dip galv .
1	Insulator body	Porcelain	Grey Glazed
S.No.	DESCRIPTION	MATERIAL	REMARKS

Title	STATION POST INSULATOR (BIL - 550 kV)	Scale	Matl.
		N.T.S.	See table
Ref.	47821-7001 [TR-287]	Drawn	Kirti Nambiar
		Checked	S.K.Dixit
		Approved	KR JC
All dimensions are in mm./inch		Date	26-09-2011

NEWELL PSN LLC	Rev.
	0