

TECHNICAL PARTICULARS

MECHANICAL VALUES

Bending strength (Upright & under hung)	lb	3500	kN	15.56
Compression strength	lb	120000	kN	534
Tensile strength	lb	40000	kN	178
Torsional strength	in lb	120000	kNm	13.56

ELECTRICAL VALUES

Dry power frequency withstand voltage	kV	375		
Wet power frequency withstand voltage	kV	315		
Dry power frequency flashover voltage	kV	405		
Wet power frequency flashover voltage	kV	345		
Lightning impulse withstand voltage	kVp	750		
Impulse flash over voltage	kVp	810		
Min. creepage distance	Inch	132	mm	3353
Net Weight (approx.)			kgs	122
Shed profile as per IEC : 60815				

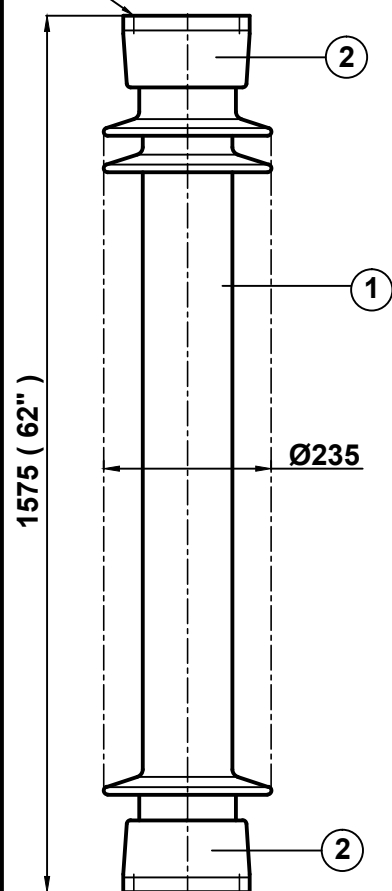
RADIO INFLUENCE VOLTAGE DATA

Test voltage to ground	kV	103
Max. RIV at 1000 kHz	µV	500

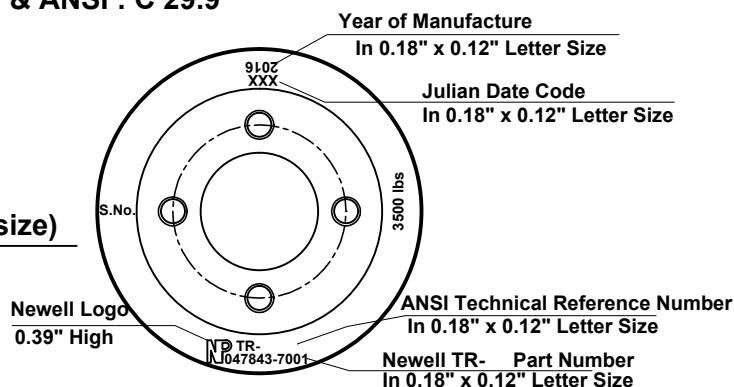
NOTE: -

Test & tolerance as per IS :2544 ,5350 &IEC :60168, 273 & ANSI : C 29.9

4 Holes 3/4"-10UNC(0.015"Oversize)
X0.866" deep on 7" PCD



4 Holes 3/4"-10UNC(0.015"Oversize)
X0.866" deep on 7" PCD



Marking at top shed

2	Caps	MCI / SGI	Hot dip galv .
1	Insulator body	Porcelain	Brown Glazed
S.No.	DESCRIPTION	MATERIAL	REMARKS
Title		Scale	Matl.
SOLIDCORE POST INSULATOR (BIL - 750 kV)		N.T.S.	See table
Ref.		Drawn	Kirti Nambiar
47843-7001 [TR-295XHS]		Checked	S.K.dixit
		Approved	KR JC
All dimension are in mm./inch.		Date	27-09-2008
NEWELL PSN LLC			Rev.
			1