

# TECHNICAL PARTICULARS

## MECHANICAL VALUES

Bending strength ( Upright )	lb	2000	(8.9kN)
Compression strength	lb	75000	(334kN)
Tensile strength	lb	25000	(111kN)
Torsional strength	in lb	90000	(10.2kNm)

## ELECTRICAL VALUES

Dry power frequency withstand voltage	kV	345
Wet power frequency withstand voltage	kV	315
Dry power frequency flashover voltage	kV	375
Wet power frequency flashover voltage	kV	340
Lightning impulse withstand voltage	kVp	750
Impulse flash over voltage	kVp	810
Min. creepage distance (132 Inches)	mm	3353
Net Weight ( approx.) (187lbs)	kgs	85
Shed profile as per IEC : 60815		

## RADIO INFLUENCE VOLTAGE DATA

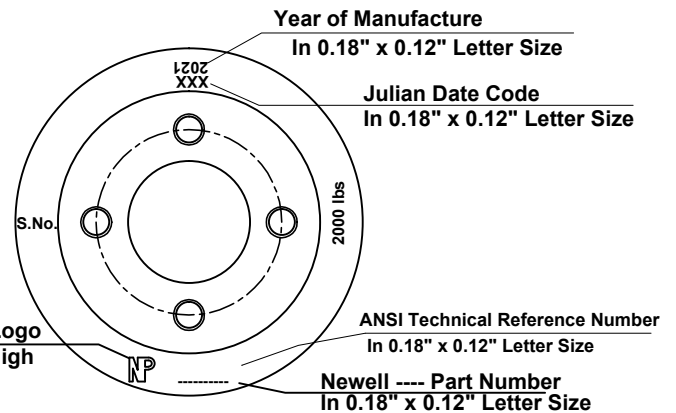
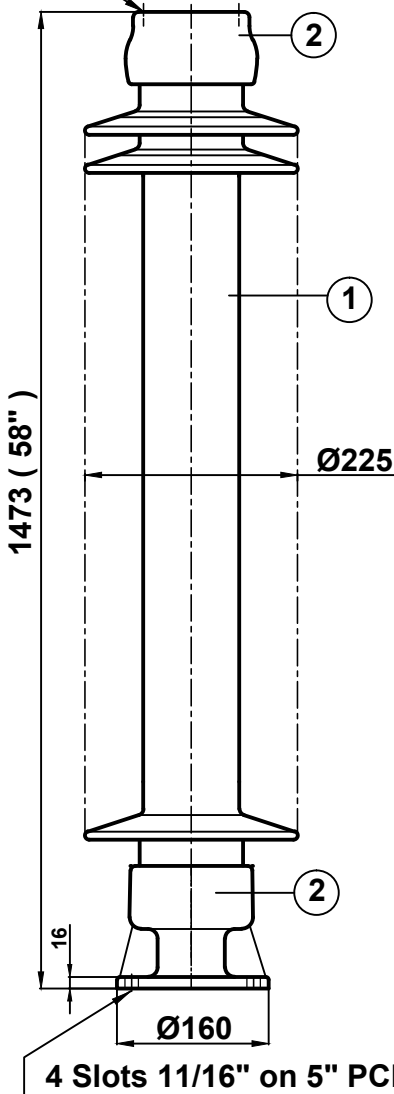
Test voltage to ground	kV	103
Max. RIV at 1000 kHz	µV	500

### NOTE: -

Test & tolerance as per ANSI : C 29.9 & C29.1

4 Holes 5/8"-11UNC( 0.015"Oversize)

X0.866" deep on 5" PCD



### Marking at top shed

2	Caps	SGI	Hot dip galv .
1	Insulator body	Porcelain	Grey Glazed
S.No.	DESCRIPTION	MATERIAL	REMARKS

Title <b>STATION POST INSULATOR</b> ( BIL - 750 kV )		Scale N.T.S.	Matl. See table
Ref. <b>NP-750-1479FL-7001</b>		Drawn	Kirti Nambiar
		Checked	s.K.Dixit
		Approved	KR JC
All dimension are in mm (inches.)		Date	17-11-2011
<b>NEWELL PSN LLC</b>		Rev.	
		<b>0</b>	