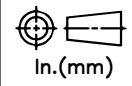
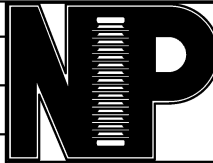


RELEASE HISTORY

a	DRAWING/DESIGN CREATED Rev.0	16.05.2015 SNR
b	DRAWING REDRAWN Rev.1	25.03.2021 RVS



PART# 231005-7001  
DRAWING NUMBER 4103AX

TITLE STATION POST INSULATOR-250kV BIL

REF. TECHNICAL REFERENCE TR-214

**TECHNICAL CHARACTERISTICS**

**MECHANICAL RATINGS**

CANTILEVER STRENGTH, lbs (kN) (Upright & Underhung)	2000 (8.9)
TENSION STRENGTH, lbs (kN)	14000 (62)
TORSION STRENGTH in-lbs (kN*M)	12000 (1.4)
COMPRESSION STRENGTH lbs (kN)	15000 (66.7)

**ELECTRICAL RATINGS**

IMPULSE WITHSTAND VOLTAGE, kV	250
CRITICAL IMPULSE FLASHOVER VOLTAGE, POSITIVE, kV	280
WET POWER FREQUENCY WITHSTAND VOLTAGE, kV	100

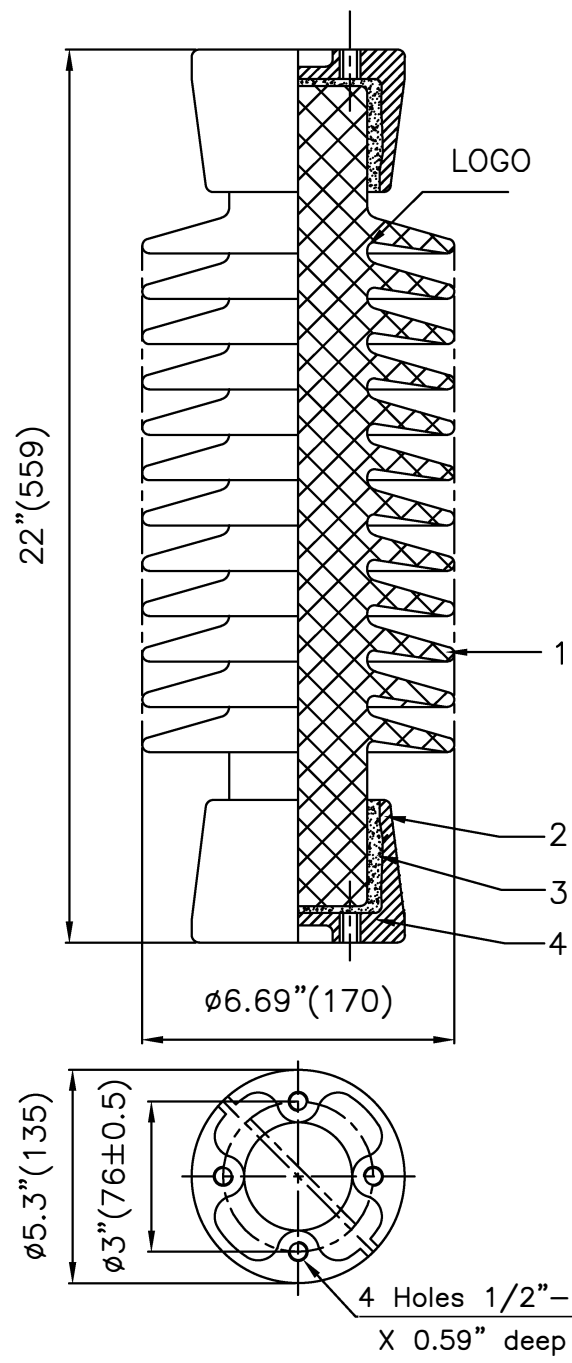
**RADIO INFLUENCE VOLTAGE RATINGS**

LOW FREQUENCY TEST VOLTAGE, kV	30
MAX. RIV AT 1000 kHz, $\mu$ V	200

**PHYSICAL CHARACTERISTICS**

MINIMUM LEAKAGE DISTANCE, in (mm)	43 (1095)
UNIT HEIGHT, in (mm)	22 (559)
NET WEIGHT, lbs (kg)	50 (22.7)
GLAZE COLOR	Light Gray

APPLICABLE STANDARD:ANSI:C29.9 & IEC:60168,273  
& IS:2544, 5350



4	Cushion	2--4	Asphalt felt
3	Cement		-
2	Cap	2	M.C.I.Hot-galvanized
1	Porcelain	1	Grey Glazed
S.No.	DESCRIPTION	QUANTITY	REMARKS

REF.	DWG.TYPE SALES	DWN. RVS	APP.
------	----------------	----------	------