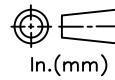
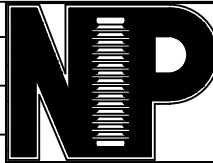


RELEASE HISTORY

a	DRAWING/DESIGN CREATED Rev.0	21.04.2002 DSS
b	DRAWING REDRAWN Rev.1	03.05.2021 RVS



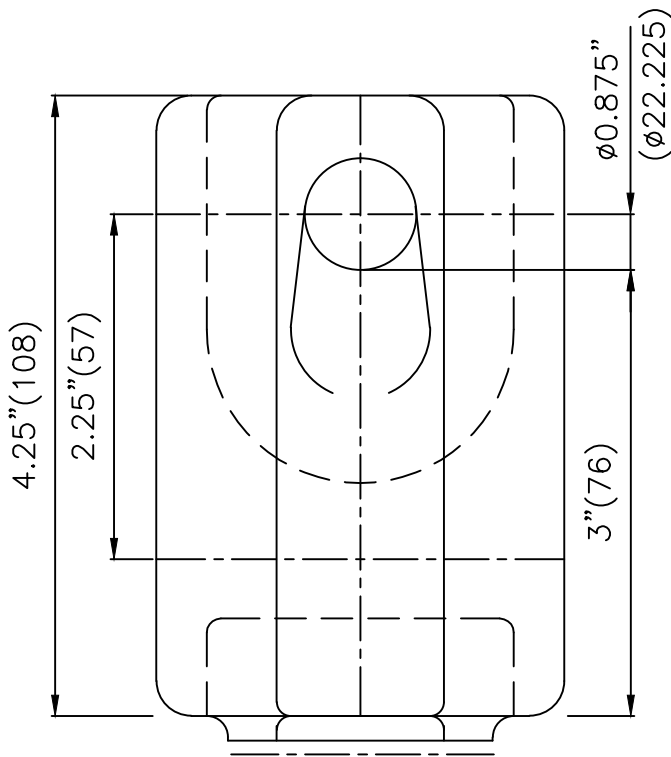
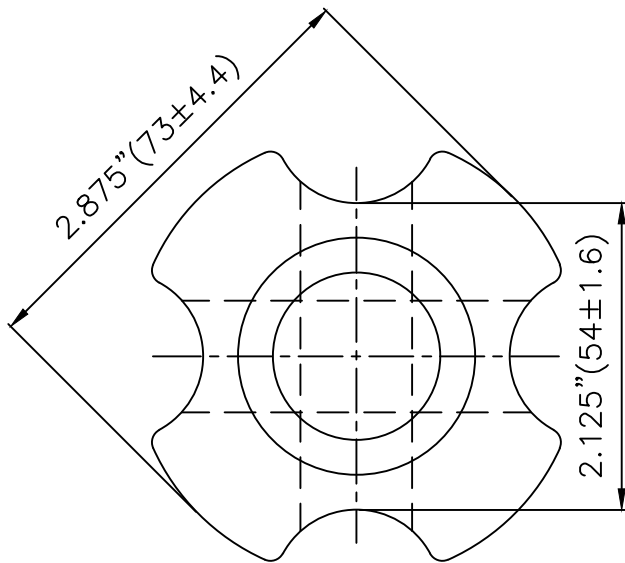
In.(mm)

PART# 2345420-7001

DRAWING NUMBER CY2.817.002

TITLE : STRAIN TYPE INSULATOR

REF. TECHNICAL REFERENCE # 54-2



TECHNICAL CHARACTERISTICS

MECHANICAL RATINGS

TENSILE STRENGTH, lbs (kN) 12000 (53)

ELECTRICAL RATINGS

LOW FREQUENCY DRY FLASHOVER VOLTAGE, kV 30

LOW FREQUENCY WET FLASHOVER VOLTAGE, kV 15

PHYSICAL CHARACTERISTICS

UNIT HEIGHT, in (mm) 4.25 (108)

UNIT DIAMETER, in (mm) 2.875 (73)

LEAKAGE DISTANCE, in (mm) 1.875 (48)

NET WEIGHT, lbs (kg) 1.5 (0.7)

GLAZE COLOR Light Gray

APPLICABLE STANDARD : ANSI C29.4

REF.CY2.817.001

DWG.TYPE SALES

DWN. RVS

APP.