

RELEASE HISTORY		
a	DRAWING/DESIGN CREATED Rev.0	27.11.2009 KN
b	DRAWING REDRAWN Rev.1	07.05.2021 RVS



 In.(mm)	PART# 235553A-7001
	DRAWING NUMBER 3CY2-805-128
TITLE PIN TYPE INSULATOR	

REF. ANSI TECHNICAL REFERENCE #

TECHNICAL CHARACTERISTICS

MECHANICAL RATINGS

CANTILEVER STRENGTH, lbs (kN) 2500 (11)

ELECTRICAL RATINGS

LOW FREQUENCY DRY FLASHOVER VOLTAGE, kV 55

LOW FREQUENCY WET FLASHOVER VOLTAGE, kV 30

CRITICAL IMPULSE FLASHOVER VOLTAGE, POSITIVE, kV 90

CRITICAL IMPULSE FLASHOVER VOLTAGE, NEGATIVE, kV 110

LOW FREQUENCY PUNCTURE VOLTAGE, kV 90

RADIO INFLUENCE VOLTAGE RATINGS

LOW FREQUENCY TEST VOLTAGE, kV 10

MAX. RIV AT 1000 kHz, μ V 50

PHYSICAL CHARACTERISTICS

LEAKAGE DISTANCE, in (mm) 7 (178)

DRY-ARCING DISTANCE, in (mm) 4.5 (114)

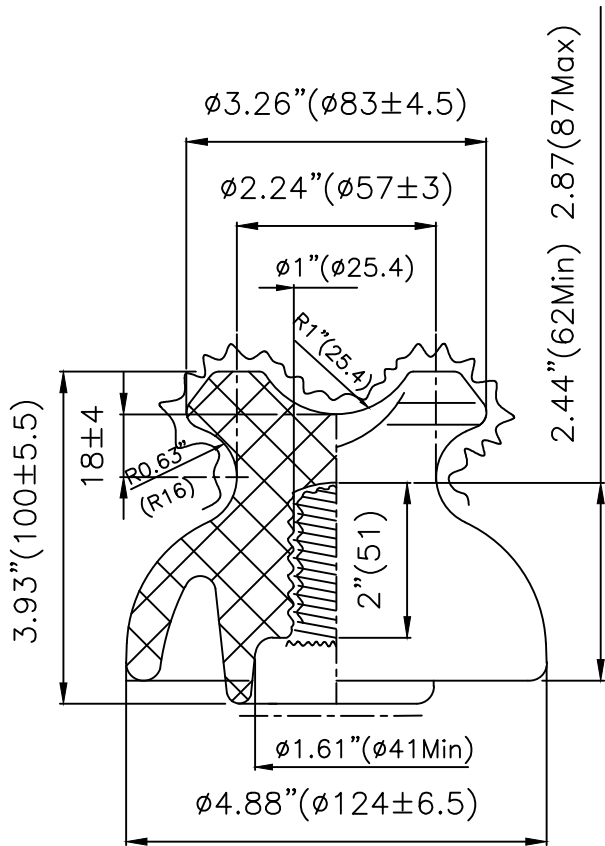
UNIT HEIGHT, in (mm) 3.93 (100)

UNIT DIAMETER, in (mm) 4.875 (124)

NET WEIGHT, lbs (kg) 2.45 (1.1)

GLAZE COLOR Light Gray

APPLICABLE STANDARD : ANSI C29.5



Note Light Grey glazed except surfaces marked-----left unglazed. Semi-conductive glaze applied on surfaces marked thus ~~~~~

REF.3CY2-805-128	DWG.TYPE SALES	DWN. RVS	APP.
------------------	----------------	----------	------