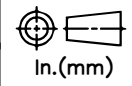


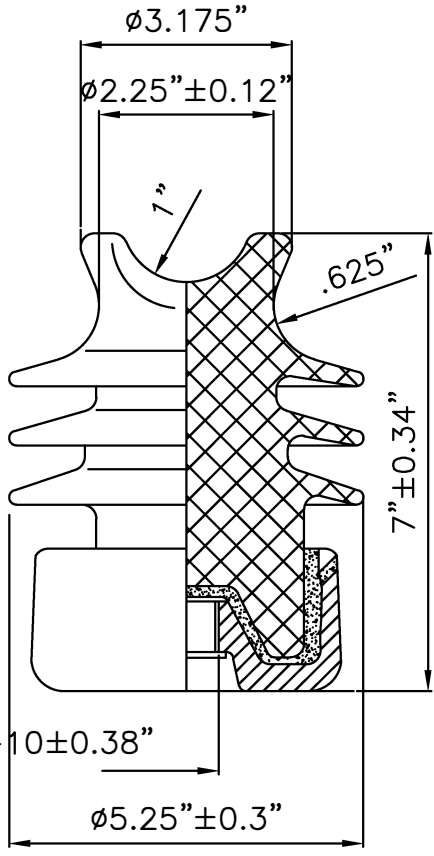
RELEASE HISTORY

| | | |
|---|------------------------------|----------------|
| a | DRAWING/DESIGN CREATED Rev.0 | 05.12.2011 SNR |
| b | DRAWING REDRAWN Rev.1 | 09.04.2021 RVS |



PART# 37600-7001
 DRAWING NUMBER 3C2.807.100
 TITLE C-NECK LINE POST INSULATOR

REF. ANSI TECHNICAL REFERENCE



TECHNICAL CHARACTERISTICS

MECHANICAL RATINGS

CANTILEVER STRENGTH, lbs (kN) 2800 (12.5)

ELECTRICAL RATINGS

CRITICAL IMPULSE FLASHOVER VOLTAGE, POSITIVE, kV 100
 LOW FREQUENCY FLASHOVER VOLTAGE, DRY, kV 70
 LOW FREQUENCY FLASHOVER VOLTAGE, WET, kV 50

RADIO INFLUENCE VOLTAGE RATINGS

LOW FREQUENCY TEST VOLTAGE, kV 10
 MAX. RIV AT 1000 kHz, μV 50

PHYSICAL CHARACTERISTICS

MINIMUM LEAKAGE DISTANCE, in (mm) 10 (254)
 DRY ARCING DISTANCE, in (mm) 5 (127)
 NET WEIGHT, lbs (kg) 7.7 (3.5)
 GLAZE COLOR Light Gray

APPLICABLE STANDARD : ANSI : C29.7

VISUAL AND DIMENSIONAL INSPECTION ACCORDING TO IEC 383

| | | | | | |
|----------|-----------|------|----------------|----------|------|
| MATERIAL | PORCELAIN | REF. | DWG.TYPE SALES | DWN. RVS | APP. |
|----------|-----------|------|----------------|----------|------|