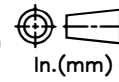


RELEASE HISTORY

a	DRAWING/DESIGN CREATED Rev.0	26.02.2016 SNR
b	DRAWING REDRAWN Rev.1	27.03.2021 RVS



PART# 41015-7001

DRAWING NUMBER NP0804

TITLE STATION POST INSULATOR-150KV BIL

REF. TECHNICAL REFERENCE TR-237

**TECHNICAL CHARACTERISTICS**

**MECHANICAL RATINGS**

CANTILEVER STRENGTH, lbs (kN) (Upright & Underhung)	8000 (35.6)
TENSION STRENGTH, lbs (kN)	28000 (124.5)
TORSION STRENGTH in-lbs (kN*M)	40000 (4.5)
COMPRESSION STRENGTH lbs (kN)	40000 (177.9)

**ELECTRICAL RATINGS**

IMPULSE WITHSTAND VOLTAGE, kV	150
CRITICAL IMPULSE FLASHOVER VOLTAGE, POSITIVE, kV	170
WET POWER FREQUENCY WITHSTAND VOLTAGE, kV	60

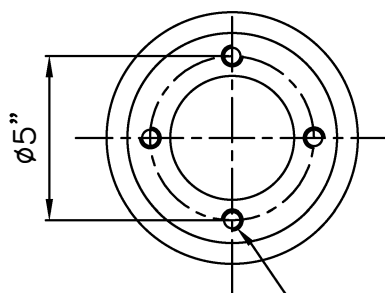
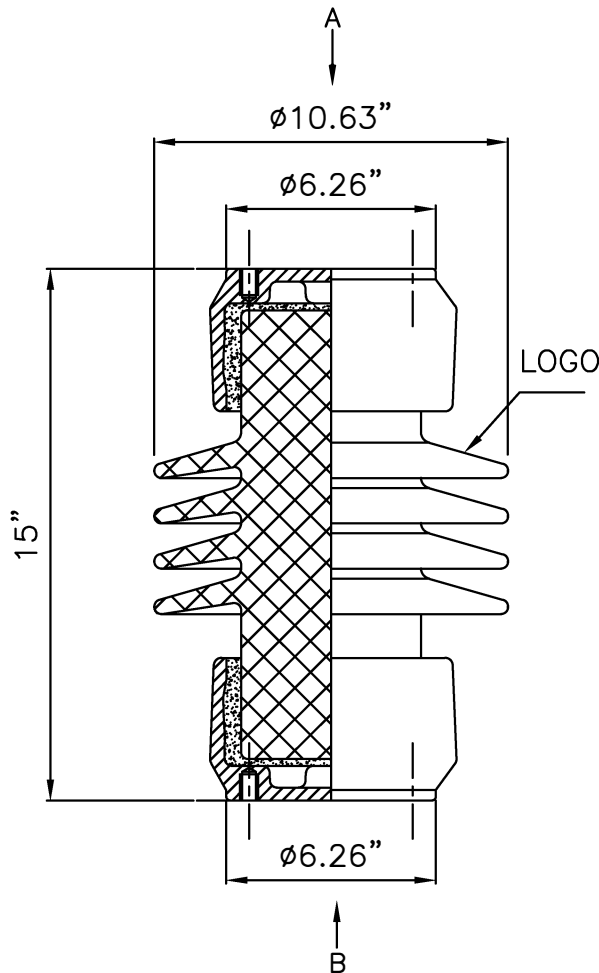
**RADIO INFLUENCE VOLTAGE RATINGS**

LOW FREQUENCY TEST VOLTAGE, kV	15
MAX. RIV AT 1000 kHz, μV	100

**PHYSICAL CHARACTERISTICS**

MINIMUM LEAKAGE DISTANCE, in (mm)	24 (610)
UNIT HEIGHT, in (mm)	15 (381)
NET WEIGHT, lbs (kg)	73 (33.2)
GLAZE COLOR	Light Gray

APPLICABLE STANDARD:ANSI:C29.9 & C29.1



AB 4 Holes 5/8"-11UFS-2B AT 90° ON 5" B.C.  
X 5/8" DEEP ON BOTH ENDS

MATERIAL	PORCELAIN	REF.	DWG.TYPE SALES	DWN. RVS	APP.
----------	-----------	------	----------------	----------	------