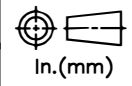
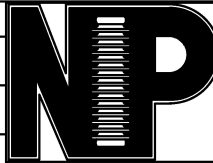


RELEASE HISTORY

a	DRAWING/DESIGN CREATED Rev.0	14.06.2018 SNR
b	DRAWING REDRAWN Rev.1	11.04.2021 RVS



PART# 43150-7001
DRAWING NUMBER 3 C2.807.228

TITLE C-NECK LINE POST INSULATOR

REF. ANSI TECHNICAL REFERENCE

TECHNICAL CHARACTERISTICS

MECHANICAL RATINGS

CANTILEVER STRENGTH, lbs (kN) 2000 (8.9)

ELECTRICAL RATINGS

CRITICAL IMPULSE FLASHOVER VOLTAGE, POSITIVE, kV 100
 LOW FREQUENCY FLASHOVER VOLTAGE, DRY, kV 60
 LOW FREQUENCY FLASHOVER VOLTAGE, WET, kV 40

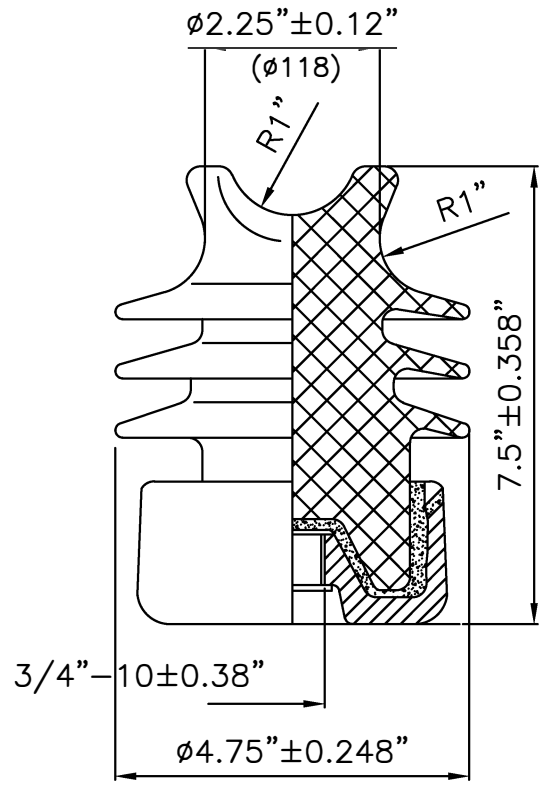
RADIO INFLUENCE VOLTAGE RATINGS

LOW FREQUENCY TEST VOLTAGE, kV 10
 MAX. RIV AT 1000 kHz, μV 50

PHYSICAL CHARACTERISTICS

MINIMUM LEAKAGE DISTANCE, in (mm) 7.5 (191)
 DRY ARCING DISTANCE, in (mm) 5 (127)
 NET WEIGHT, lbs (kg) 8.5 (3.9)
 GLAZE COLOR Light Gray

APPLICABLE STANDARD : ANSI : C29.7



VISUAL AND DIMENSIONAL INSPECTION ACCORDING TO IEC 383

MATERIAL	PORCELAIN	REF.	DWG. TYPE SALES	DWN. RVS	APP.
----------	-----------	------	-----------------	----------	------