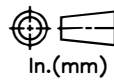
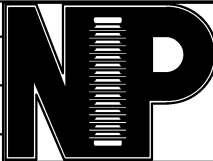


RELEASE HISTORY

a	DRAWING/DESIGN CREATED Rev.0	30.11.2010 SNR
b	DRAWING REDRAWN Rev.1	11.04.2021 RVS



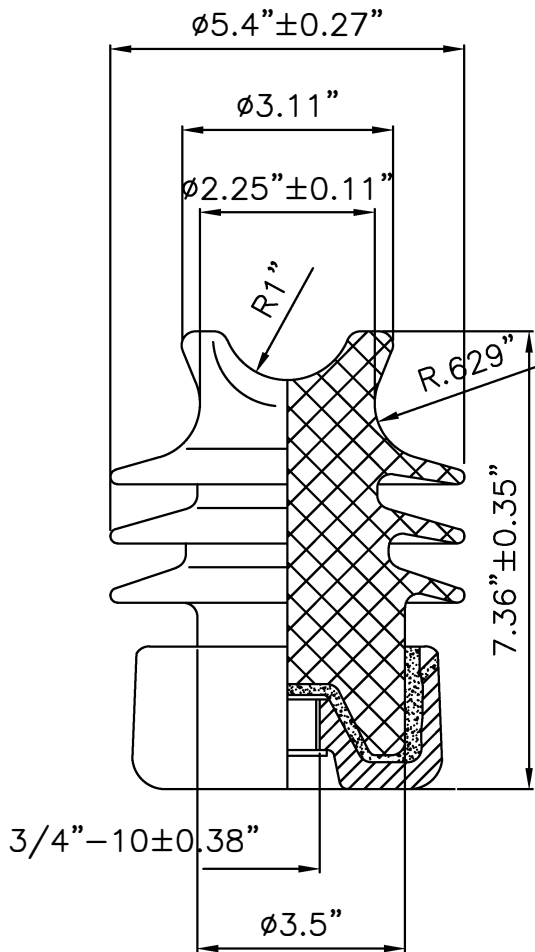
In.(mm)

PART# 43400-7001

DRAWING NUMBER 3CY2.807.084

TITLE C-NECK LINE POST INSULATOR

REF. ANSI TECHNICAL REFERENCE



TECHNICAL CHARACTERISTICS

MECHANICAL RATINGS

CANTILEVER STRENGTH, lbs (kN) 1500 (6.7)

ELECTRICAL RATINGS

CRITICAL IMPULSE FLASHOVER VOLTAGE, POSITIVE, kV 105

LOW FREQUENCY FLASHOVER VOLTAGE, DRY, kV 80

LOW FREQUENCY FLASHOVER VOLTAGE, WET, kV 55

RADIO INFLUENCE VOLTAGE RATINGS

LOW FREQUENCY TEST VOLTAGE, kV 15

MAX. RIV AT 1000 kHz, μV 50

PHYSICAL CHARACTERISTICS

MINIMUM LEAKAGE DISTANCE, in (mm) 11 (279)

DRY ARCING DISTANCE, in (mm) 5.75 (146)

NET WEIGHT, lbs (kg) 8.8 (4)

GLAZE COLOR Light Gray

APPLICABLE STANDARD : ANSI : C29.7

VISUAL AND DIMENSIONAL INSPECTION ACCORDING TO IEC 383

MATERIAL	PORCELAIN	REF.	DWG.TYPE SALES	DWN. RVS	APP.
----------	-----------	------	----------------	----------	------