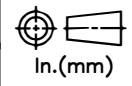


RELEASE HISTORY

a	DRAWING/DESIGN CREATED Rev.0	23.02.2012 SNR
b	DRAWING REDRAWN Rev.1	11.04.2021 RVS



PART# 43401-7001  
DRAWING NUMBER 3CY2.807.104

TITLE C-NECK LINE POST INSULATOR

REF. ANSI TECHNICAL REFERENCE

**TECHNICAL CHARACTERISTICS**

**MECHANICAL RATINGS**

CANTILEVER STRENGTH, lbs (kN) 1500 (6.7)

**ELECTRICAL RATINGS**

CRITICAL IMPULSE FLASHOVER VOLTAGE, POSITIVE, kV 135  
 LOW FREQUENCY FLASHOVER VOLTAGE, DRY, kV 95  
 LOW FREQUENCY FLASHOVER VOLTAGE, WET, kV 65

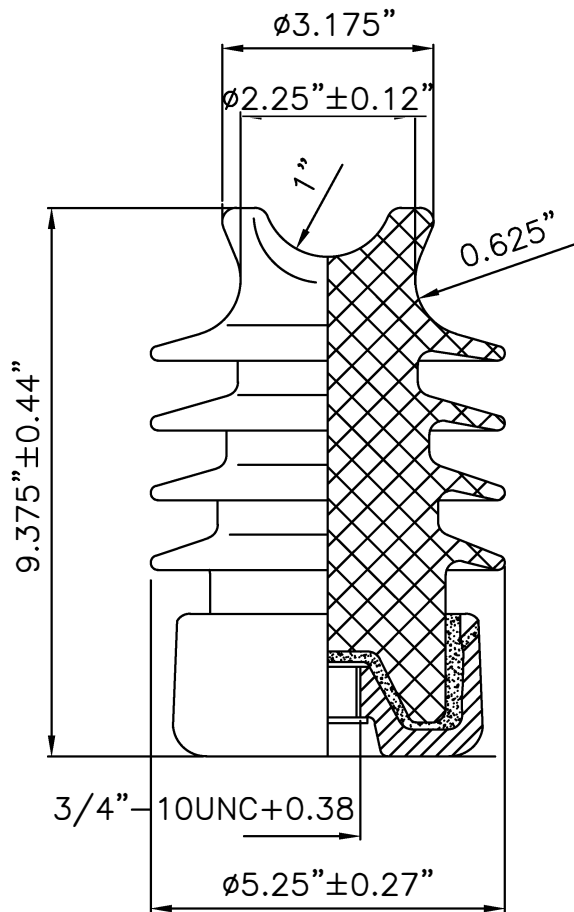
**RADIO INFLUENCE VOLTAGE RATINGS**

LOW FREQUENCY TEST VOLTAGE, kV 15  
 MAX. RIV AT 1000 kHz, μV 50

**PHYSICAL CHARACTERISTICS**

MINIMUM LEAKAGE DISTANCE, in (mm) 15 (381)  
 DRY ARCING DISTANCE, in (mm) 7.625 (194)  
 NET WEIGHT, lbs (kg) 13.3 (6)  
 GLAZE COLOR Light Gray

APPLICABLE STANDARD : ANSI : C29.7



VISUAL AND DIMENSIONAL INSPECTION ACCORDING TO IEC 383

MATERIAL	PORCELAIN	REF.	DWG.TYPE SALES	DWN. RVS	APP.
----------	-----------	------	----------------	----------	------