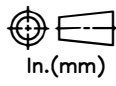


RELEASE HISTORY

a	DRAWING/DESIGN CREATED Rev.0	22.08.2013 SNR
b	DRAWING REDRAWN Rev.1	13.04.2021 RVS



PART# 43930-7001  
DRAWING NUMBER 3CY2.807.132

TITLE VERTICAL CLAMPTOP LINE POST INSULATOR

REF. ANSI TECHNICAL REFERENCE #57-12

**TECHNICAL CHARACTERISTICS**

**MECHANICAL RATINGS**

CANTILEVER STRENGTH, lbs (kN) 2800 (12.5)

**ELECTRICAL RATINGS**

CRITICAL IMPULSE FLASHOVER VOLTAGE, POSITIVE, kV 160  
 LOW FREQUENCY FLASHOVER VOLTAGE, DRY, kV 100  
 LOW FREQUENCY FLASHOVER VOLTAGE, WET, kV 70

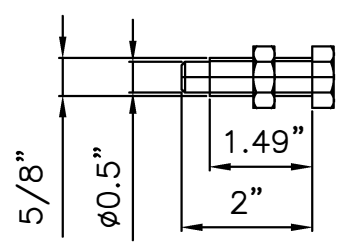
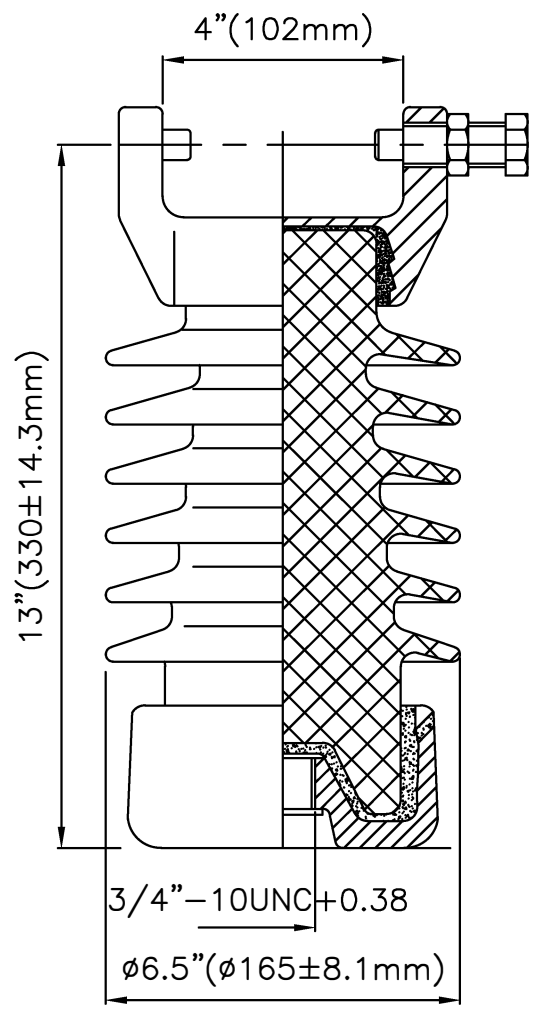
**RADIO INFLUENCE VOLTAGE RATINGS**

LOW FREQUENCY TEST VOLTAGE, kV 22  
 MAX. RIV AT 1000 kHz, μV 100

**PHYSICAL CHARACTERISTICS**

MINIMUM LEAKAGE DISTANCE, in (mm) 22 (559)  
 DRY ARCING DISTANCE, in (mm) 9.5 (241)  
 NET WEIGHT, lbs (kg) 22 (10)  
 GLAZE COLOR Light Gray

APPLICABLE STANDARD : ANSI : C29.7



VISUAL AND DIMENSIONAL INSPECTION ACCORDING TO IEC 383

MATERIAL	PORCELAIN	REF.	DWG.TYPE SALES	DWN. RVS	APP.
----------	-----------	------	----------------	----------	------