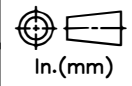
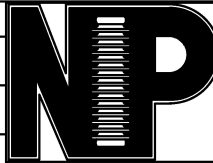


RELEASE HISTORY

a	DRAWING/DESIGN CREATED Rev.0	06.11.2014 SNR
b	DRAWING REDRAWN Rev.1	13.04.2021 RVS



PART# 43940-7001  
 DRAWING NUMBER 3CY2.807.161  
 TITLE VERTICAL CLAMPTOP LINE POST INSULATOR

REF. ANSI TECHNICAL REFERENCE # 57-13

**TECHNICAL CHARACTERISTICS**

**MECHANICAL RATINGS**

CANTILEVER STRENGTH, lbs (kN) 3000 (13.4)

**ELECTRICAL RATINGS**

CRITICAL IMPULSE FLASHOVER VOLTAGE, POSITIVE, kV 210  
 LOW FREQUENCY FLASHOVER VOLTAGE, DRY, kV 125  
 LOW FREQUENCY FLASHOVER VOLTAGE, WET, kV 100

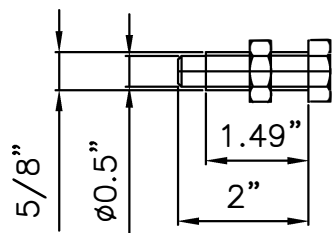
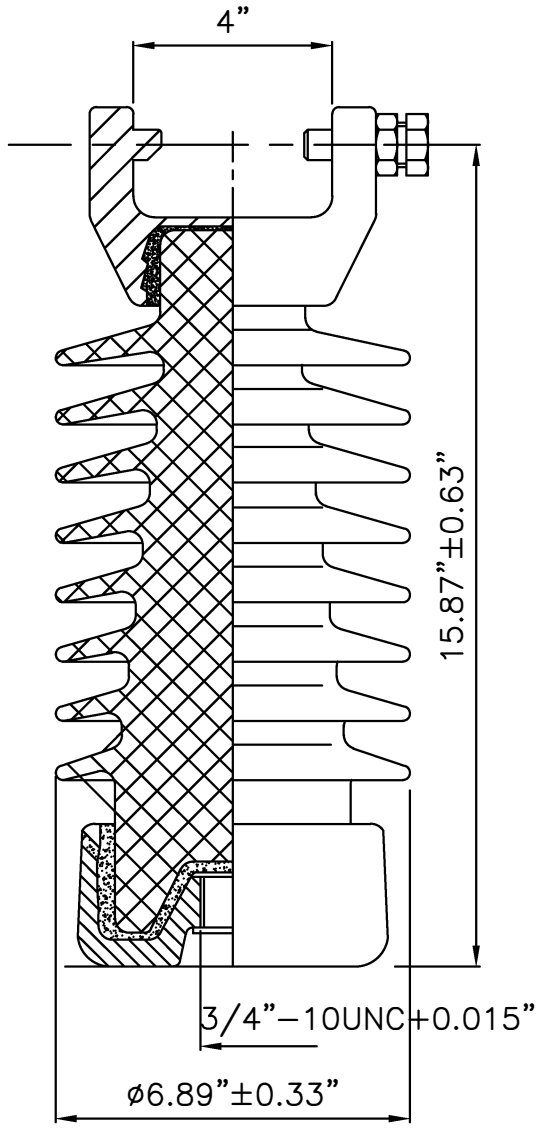
**RADIO INFLUENCE VOLTAGE RATINGS**

LOW FREQUENCY TEST VOLTAGE, kV 30  
 MAX. RIV AT 1000 kHz, μV 200

**PHYSICAL CHARACTERISTICS**

MINIMUM LEAKAGE DISTANCE, in (mm) 29 (737)  
 DRY ARCING DISTANCE, in (mm) 12.25 (311)  
 NET WEIGHT, lbs (kg) 26.5 (12)  
 GLAZE COLOR Light Gray

APPLICABLE STANDARD : ANSI : C29.7



VISUAL AND DIMENSIONAL INSPECTION ACCORDING TO IEC 383

MATERIAL	PORCELAIN	REF.	DWG.TYPE SALES	DWN. RVS	APP.
----------	-----------	------	----------------	----------	------