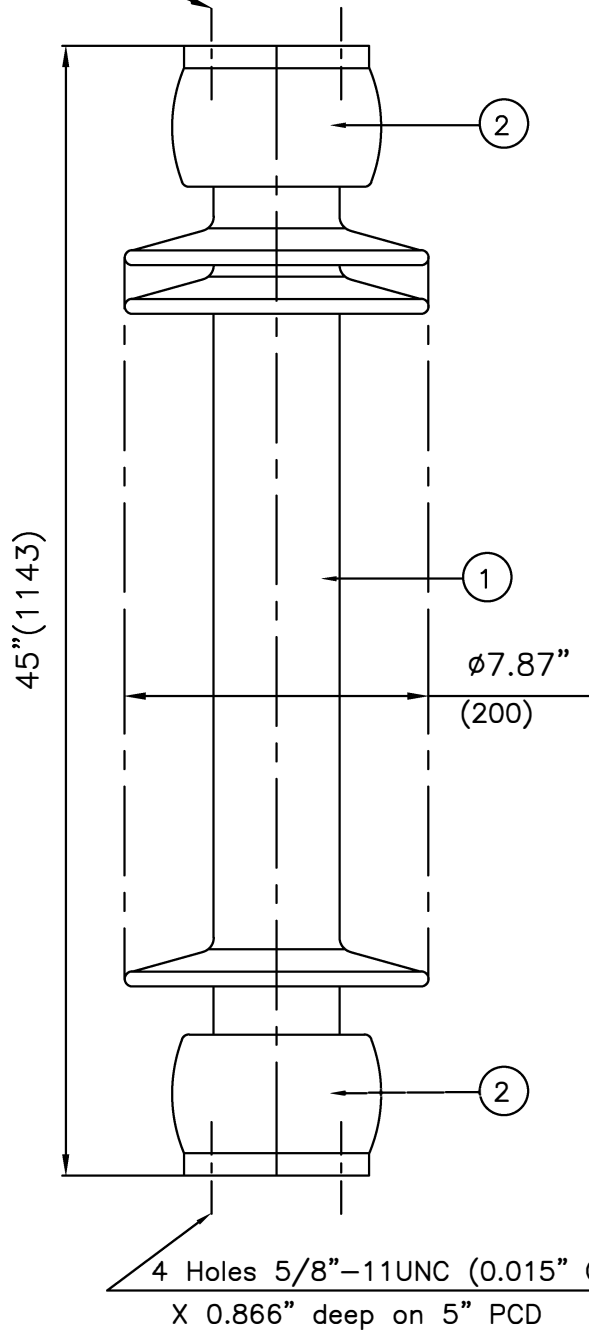


RELEASE HISTORY		
a	DRAWING/DESIGN CREATED Rev.0	08.09.2010 KN
b	DRAWING REDRAWN Rev.1	25.04.2021 RVS



 In.(mm)	<b>PART# 47801-7001</b>
	DRAWING NUMBER 212-C-1439
TITLE STATION POST INSULATOR-550kV BIL	
REF. TECHNICAL REFERENCE TR-286	

4 Holes 5/8"-11UNC (0.015" Oversize)  
X 0.866 deep on 5" PCD



**TECHNICAL CHARACTERISTICS**

MECHANICAL RATINGS

CANTILEVER STRENGTH, lbs (kN) (Upright & Underhung)	1700 (7.56)
TENSION STRENGTH, lbs (kN)	20000 (89)
TORSION STRENGTH in-lbs (kN*M)	60000 (6.78)
COMPRESSION STRENGTH lbs (kN)	60000 (267)

ELECTRICAL RATINGS

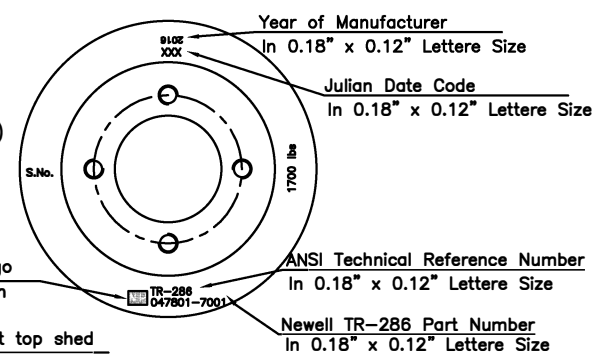
IMPULSE WITHSTAND VOLTAGE, kV	550
CRITICAL IMPULSE FLASHOVER VOLTAGE, POSITIVE, kV	610
WET POWER FREQUENCY WITHSTAND VOLTAGE, kV	230

RADIO INFLUENCE VOLTAGE RATINGS

LOW FREQUENCY TEST VOLTAGE, kV	73
MAX. RIV AT 1000 kHz, μV	200

PHYSICAL CHARACTERISTICS

MINIMUM LEAKAGE DISTANCE, in (mm)	99 (2515)
UNIT HEIGHT, in (mm)	45 (1143)
NET WEIGHT, lbs (kg)	118.8 (54)
GLAZE COLOR	Light Gray
APPLICABLE STANDARD:ANSI:C29.9 & IEC:60168,273 & IS:2544, 5350	



2	Caps	MCI/SGI	Hot dip.galv.
1	Insulator body	Porcelain	Grey Glazed
S.No.	DESCRIPTION	MATERIAL	REMARKS

REF.212-C-1439	DWG.TYPE SALES	DWN. RVS	APP.
----------------	----------------	----------	------