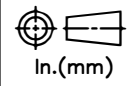
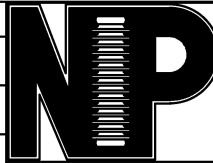


RELEASE HISTORY		
a	DRAWING/DESIGN CREATED Rev.0	05.09.2010 KN
b	DRAWING REDRAWN Rev.1	25.04.2021 RVS

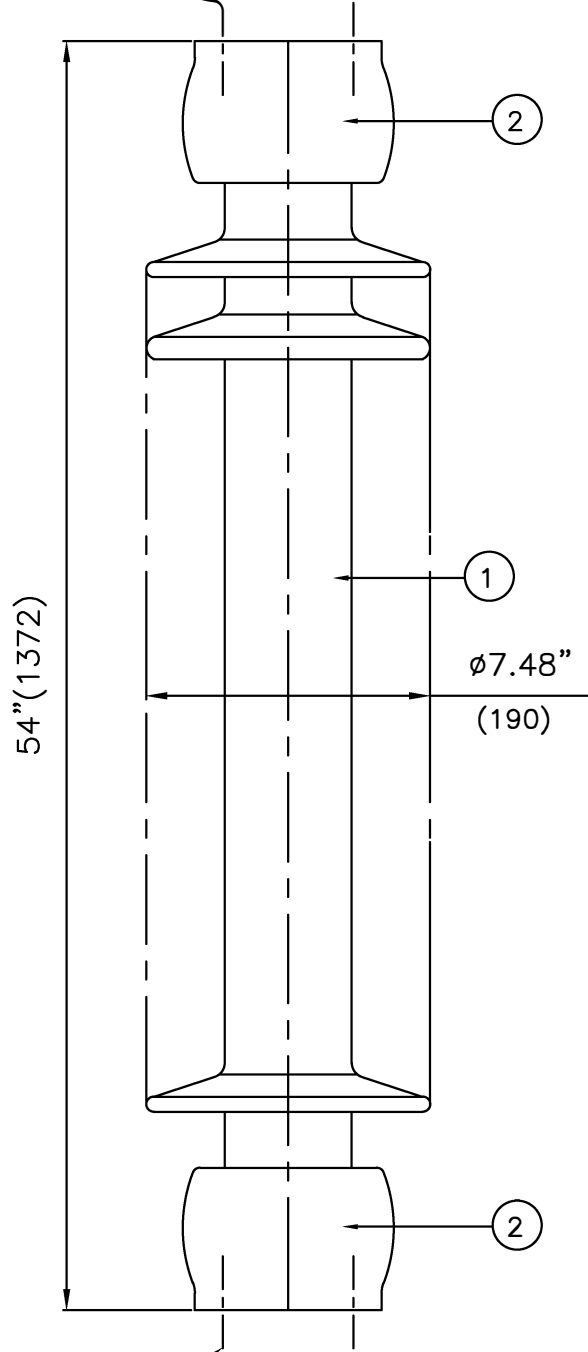


PART# 47802-7001
DRAWING NUMBER 212-C-1440

TITLE STATION POST INSULATOR-650kV BIL

REF. TECHNICAL REFERENCE TR-288

4 Holes 5/8"-11UNC (0.015" Oversize)
X 0.866" deep on 5" PCD



4 Holes 5/8"-11UNC (0.015" Oversize)
X 0.866" deep on 5" PCD

TECHNICAL CHARACTERISTICS

MECHANICAL RATINGS

CANTILEVER STRENGTH, lbs (kN) (Upright & Underhung)	1450 (6.45)
TENSION STRENGTH, lbs (kN)	20000 (89)
TORSION STRENGTH in-lbs (kN*M)	60000 (6.78)
COMPRESSION STRENGTH lbs (kN)	60000 (267)

ELECTRICAL RATINGS

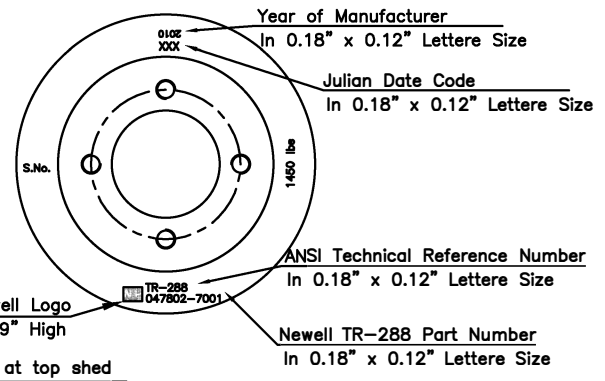
IMPULSE WITHSTAND VOLTAGE, kV	650
CRITICAL IMPULSE FLASHOVER VOLTAGE, POSITIVE, kV	710
WET POWER FREQUENCY WITHSTAND VOLTAGE, kV	275

RADIO INFLUENCE VOLTAGE RATINGS

LOW FREQUENCY TEST VOLTAGE, kV	88
MAX. RIV AT 1000 kHz, μV	200

PHYSICAL CHARACTERISTICS

MINIMUM LEAKAGE DISTANCE, in (mm)	116 (2947)
UNIT HEIGHT, in (mm)	54 (1372)
NET WEIGHT, lbs (kg)	132 (60)
GLAZE COLOR	Light Gray
APPLICABLE STANDARD:ANSI:C29.9 & IEC:60168,273 & IS:2544, 5350	



2	caps	MCI/SGI	Hot dip.galv.
1	Insulator body	Porcelain	Grey Glazed
S.No.	DESCRIPTION	MATERIAL	REMARKS

REF.212-C-1440	DWG.TYPE SALES	DWN. RVS	APP.
----------------	----------------	----------	------