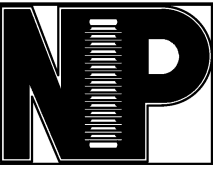


RELEASE HISTORY		
a	DRAWING/DESIGN CREATED Rev.0	06.09.2010 KN
b	DRAWING REDRAWN Rev.1	25.04.2021 RVS



In.(mm)  
**PART# 47803-7001**  
 DRAWING NUMBER 212-C-1441

4 Holes 5/8"-11UNC (0.015" Oversize)  
X 0.866" deep on 5" PCD

TITLE STATION POST INSULATOR-750kV BIL  
REF. TECHNICAL REFERENCE TR-291

**TECHNICAL CHARACTERISTICS**

**MECHANICAL RATINGS**

CANTILEVER STRENGTH, lbs (kN) (Upright & Underhung)	1200 (5.33)
TENSION STRENGTH, lbs (kN)	20000 (89)
TORSION STRENGTH in-lbs (kN*M)	60000 (6.78)
COMPRESSION STRENGTH lbs (kN)	60000 (267)

**ELECTRICAL RATINGS**

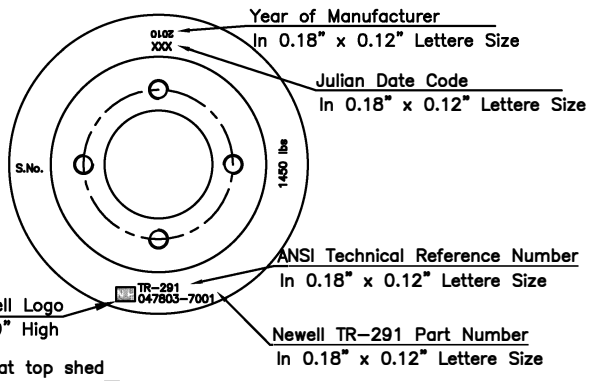
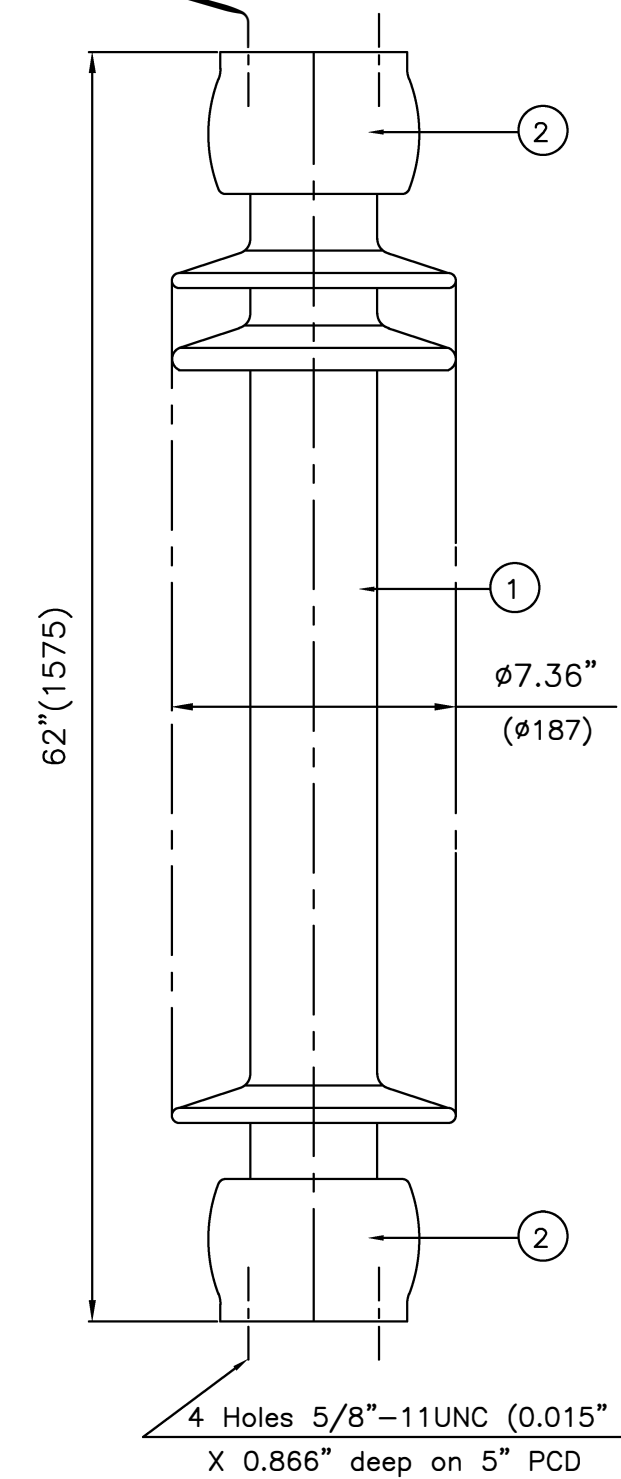
IMPULSE WITHSTAND VOLTAGE, kV	750
CRITICAL IMPULSE FLASHOVER VOLTAGE, POSITIVE, kV	810
WET POWER FREQUENCY WITHSTAND VOLTAGE, kV	315

**RADIO INFLUENCE VOLTAGE RATINGS**

LOW FREQUENCY TEST VOLTAGE, kV	103
MAX. RIV AT 1000 kHz, μV	500

**PHYSICAL CHARACTERISTICS**

MINIMUM LEAKAGE DISTANCE, in (mm)	132 (3353)
UNIT HEIGHT, in (mm)	62 (1575)
NET WEIGHT, lbs (kg)	150 (68)
GLAZE COLOR	Light Gray
APPLICABLE STANDARD:ANSI:C29.9 & IEC:60168,273 & IS:2544, 5350	



2	Caps	MCI/SGI	Hot dip.galv.
1	Insulator body	Porcelain	Grey Glazed
S.No.	DESCRIPTION	MATERIAL	REMARKS

REF.212-C-1441	DWG.TYPE SALES	DWN. RVS	APP.
----------------	----------------	----------	------