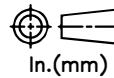


RELEASE HISTORY

a	DRAWING/DESIGN CREATED Rev.0	05.02.1998 PG
b	DRAWING REDRAWN Rev.1	25.04.2021 RVS



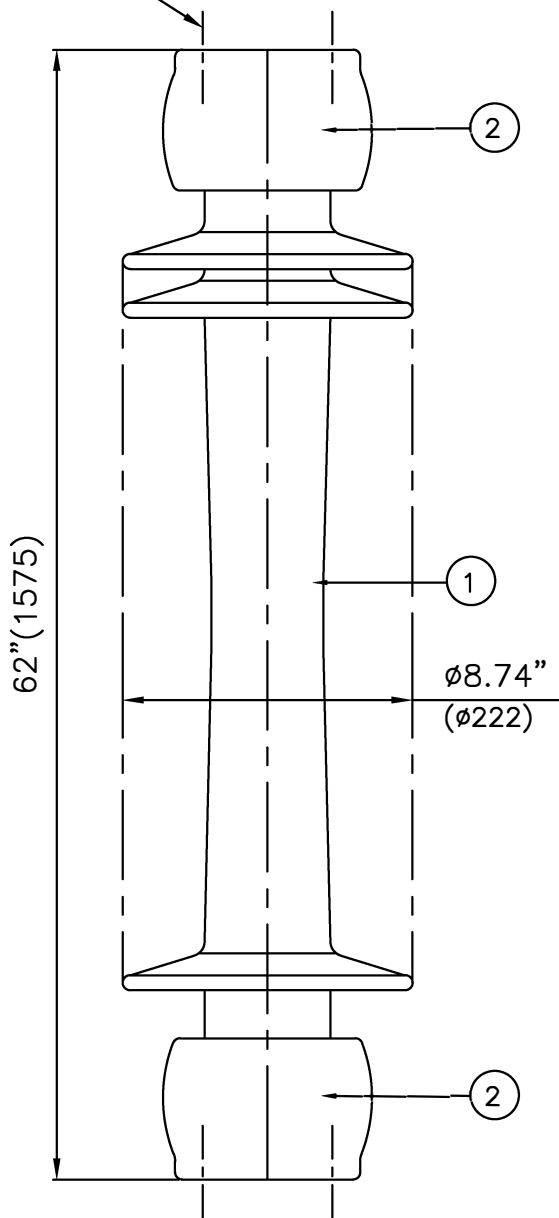
PART# 47823-7001

DRAWING NUMBER 212-C-192

TITLE STATION POST INSULATOR-750kV BIL

REF. TECHNICAL REFERENCE TR-295

4 Holes 5/8"-11UNC (0.015" Oversize)
X 0.866 deep on 5" PCD



4 Holes 5/8"-11UNC (0.015" Oversize)
X 0.866" deep on 5" PCD

TECHNICAL CHARACTERISTICS

MECHANICAL RATINGS

CANTILEVER STRENGTH, lbs (kN) (Upright & Underhung)	2000 (8.9)
TENSION STRENGTH, lbs (kN)	25000 (111)
TORSION STRENGTH in-lbs (kN*M)	90000 (10.2)
COMPRESSION STRENGTH lbs (kN)	90000 (400)

ELECTRICAL RATINGS

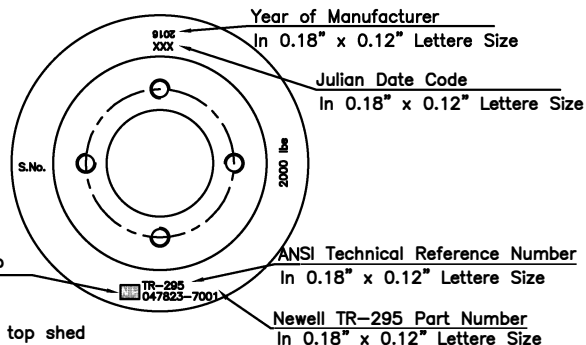
IMPULSE WITHSTAND VOLTAGE, kV	750
CRITICAL IMPULSE FLASHOVER VOLTAGE, POSITIVE, kV	810
WET POWER FREQUENCY WITHSTAND VOLTAGE, kV	315

RADIO INFLUENCE VOLTAGE RATINGS

LOW FREQUENCY TEST VOLTAGE, kV	103
MAX. RIV AT 1000 kHz, μV	500

PHYSICAL CHARACTERISTICS

MINIMUM LEAKAGE DISTANCE, in (mm)	132 (3353)
UNIT HEIGHT, in (mm)	62 (1575)
NET WEIGHT, lbs (kg)	198 (90)
GLAZE COLOR	Light Gray
APPLICABLE STANDARD:ANSI:C29.9 & IEC:60168,273 & IS:2544, 5350	



Newell Logo
0.39" High

Marking at top shed

2	Caps	MCI/SGI	Hot dip.galv.
1	Insulator body	Porcelain	Grey Glazed
S.No.	DESCRIPTION	MATERIAL	REMARKS

REF.212-C-192	DWG.TYPE SALES	DWN. RVS	APP.
---------------	----------------	----------	------