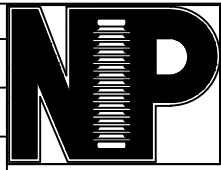
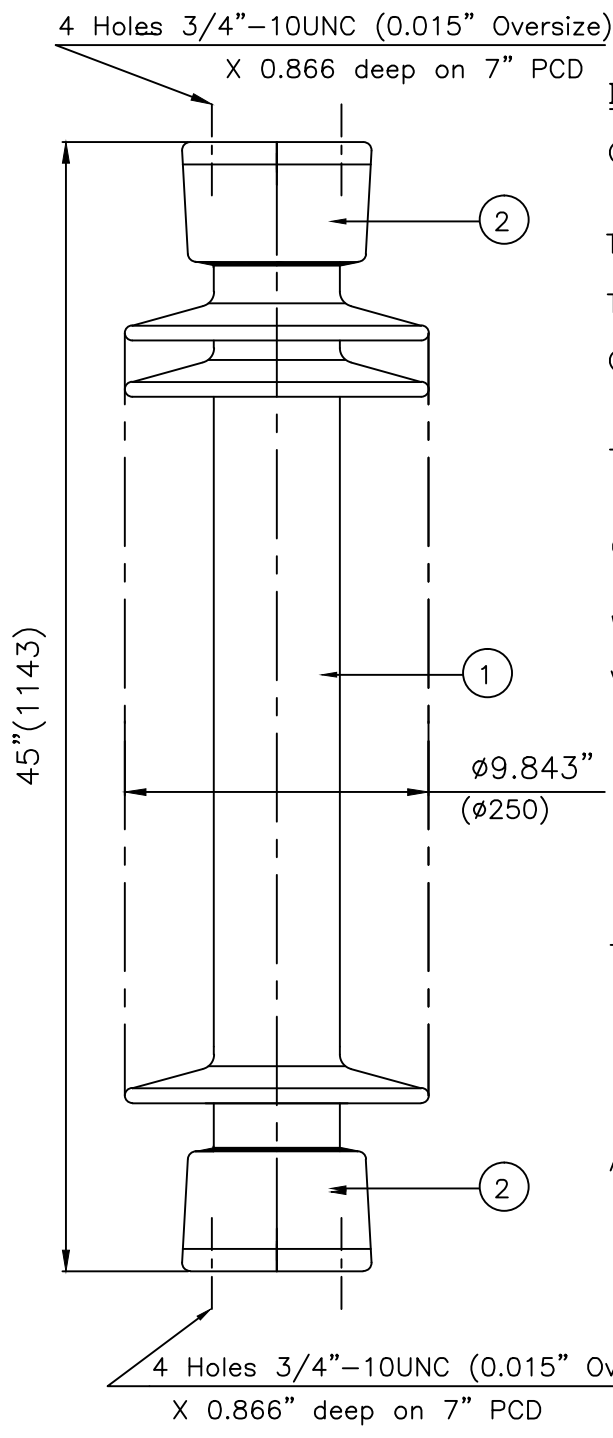


RELEASE HISTORY		
a	DRAWING/DESIGN CREATED Rev.0	21.04.2010 KN
b	DRAWING REDRAWN Rev.1	13.05.2021 RVS



 In.(mm)	PART# 47841-7001
	DRAWING NUMBER 212-C-1418
TITLE STATION POST INSULATOR-550kV BIL	
REF. TECHNICAL REFERENCE TR-	



**TECHNICAL CHARACTERISTICS**

**MECHANICAL RATINGS**

CANTILEVER STRENGTH, lbs (kN) (Upright & Underhung)	5000 (22.24)
TENSION STRENGTH, lbs (kN)	40000 (178)
TORSION STRENGTH in-lbs (kN*M)	120000 (13.56)
COMPRESSION STRENGTH lbs (kN)	120000 (534)

**ELECTRICAL RATINGS**

IMPULSE WITHSTAND VOLTAGE, kV	550
CRITICAL IMPULSE FLASHOVER VOLTAGE, POSITIVE, kV	610
WET POWER FREQUENCY WITHSTAND VOLTAGE, kV	230

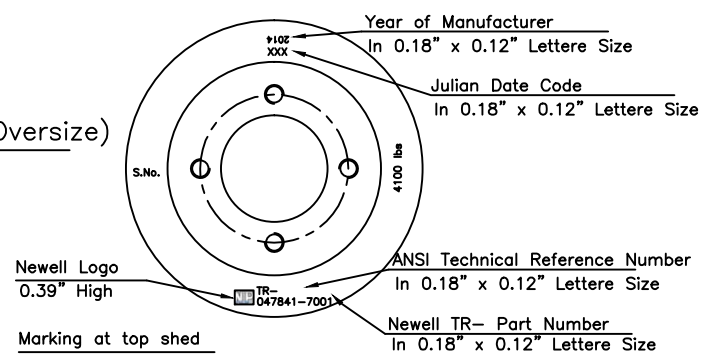
**RADIO INFLUENCE VOLTAGE RATINGS**

LOW FREQUENCY TEST VOLTAGE, kV	73
MAX. RIV AT 1000 kHz, $\mu$ V	200

**PHYSICAL CHARACTERISTICS**

MINIMUM LEAKAGE DISTANCE, in (mm)	99 (2515)
UNIT HEIGHT, in (mm)	45 (1143)
NET WEIGHT, lbs (kg)	213 (97)
GLAZE COLOR	Light Gray

APPLICABLE STANDARD: ANSI: C29.9 & 29.1  
IEC:60168,273 & IS:2544, 5350



2	Caps	MCI/SGL	Hot dip.galv.
1	Insulator body	Porcelain	Grey Glazed
S.No.	DESCRIPTION	MATERIAL	REMARKS

REF.212-C-1418	DWG.TYPE SALES	DWN. RVS	APP.
----------------	----------------	----------	------