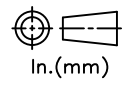


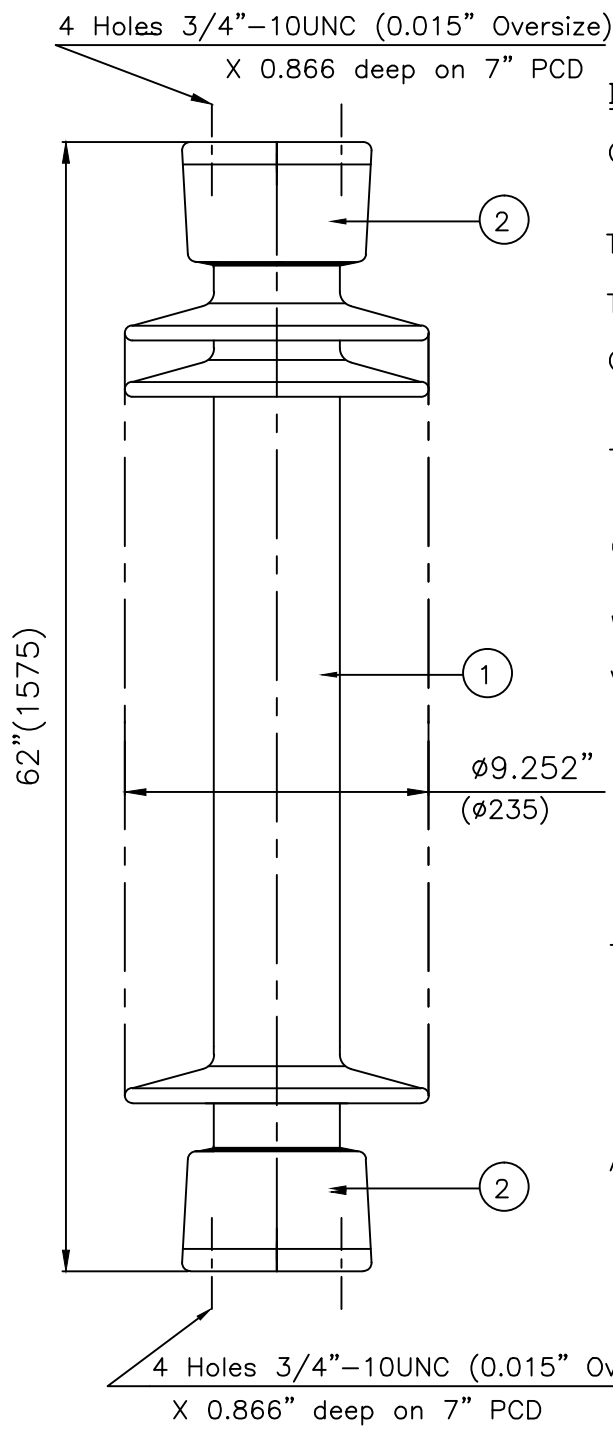
RELEASE HISTORY		
a	DRAWING/DESIGN CREATED Rev.0	27.09.2008 KN
b	DRAWING REDRAWN Rev.1	13.05.2021 RVS



PART# 47843-7001
DRAWING NUMBER 212-C-1080

TITLE STATION POST INSULATOR-750kV BIL

REF. TECHNICAL REFERENCE TR-



TECHNICAL CHARACTERISTICS

MECHANICAL RATINGS

CANTILEVER STRENGTH, lbs (kN) (Upright & Underhung)	3500 (15.56)
TENSION STRENGTH, lbs (kN)	40000 (178)
TORSION STRENGTH in-lbs (kN*M)	120000 (13.56)
COMPRESSION STRENGTH lbs (kN)	120000 (534)

ELECTRICAL RATINGS

IMPULSE WITHSTAND VOLTAGE, kV	750
CRITICAL IMPULSE FLASHOVER VOLTAGE, POSITIVE, kV	810
WET POWER FREQUENCY WITHSTAND VOLTAGE, kV	315

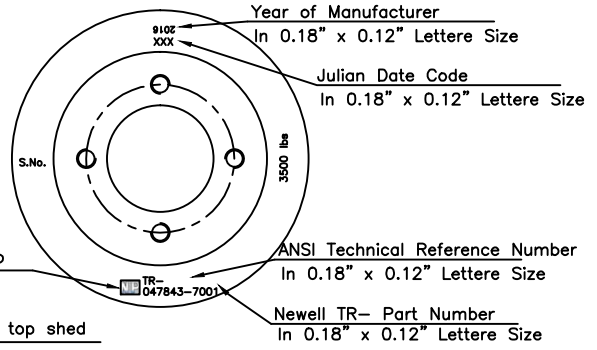
RADIO INFLUENCE VOLTAGE RATINGS

LOW FREQUENCY TEST VOLTAGE, kV	103
MAX. RIV AT 1000 kHz, µV	500

PHYSICAL CHARACTERISTICS

MINIMUM LEAKAGE DISTANCE, in (mm)	132 (3353)
UNIT HEIGHT, in (mm)	62 (1575)
NET WEIGHT, lbs (kg)	268 (122)
GLAZE COLOR	Light Gray

APPLICABLE STANDARD: ANSI: C29.9 & 29.1
IEC:60168,273 & IS:2544, 5350



2	Caps	MCI/SGI	Hot dip.galv.
1	Insulator body	Porcelain	Grey Glazed
S.No.	DESCRIPTION	MATERIAL	REMARKS

REF.212-C-1039	DWG.TYPE SALES	DWN. RVS	APP.
----------------	----------------	----------	------