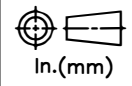


RELEASE HISTORY

a	DRAWING/DESIGN CREATED Rev.0	05.05.2008 SNR
b	DRAWING REDRAWN Rev.1	16.04.2021 RVS

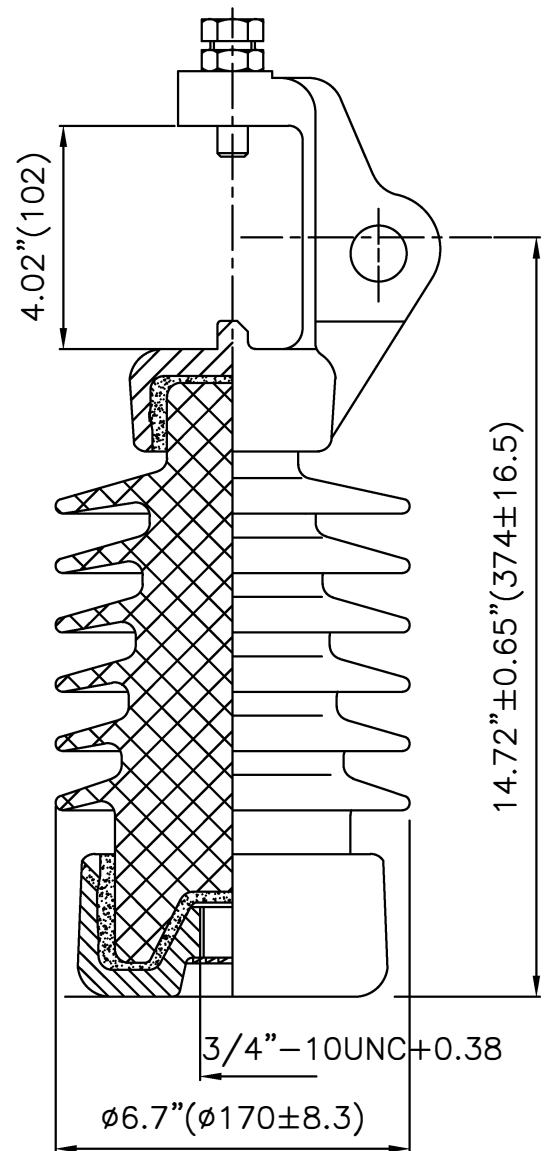


PART# 48623-7001

DRAWING NUMBER 3CY2.807.046

TITLE HORIZONTAL CLAMPTOP LINE POST INSULATOR-STUD MOUNT

REF. ANSI TECHNICAL REFERENCE # 57-22



**TECHNICAL CHARACTERISTICS**

**MECHANICAL RATINGS**

CANTILEVER STRENGTH, lbs (kN) 2800 (12.5)

**ELECTRICAL RATINGS**

CRITICAL IMPULSE FLASHOVER VOLTAGE, POSITIVE, kV 180  
 LOW FREQUENCY FLASHOVER VOLTAGE, DRY, kV 110  
 LOW FREQUENCY FLASHOVER VOLTAGE, WET, kV 85

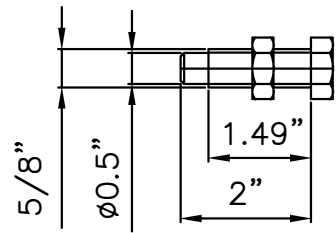
**RADIO INFLUENCE VOLTAGE RATINGS**

LOW FREQUENCY TEST VOLTAGE, kV 22  
 MAX. RIV AT 1000 kHz, µV 100

**PHYSICAL CHARACTERISTICS**

MINIMUM LEAKAGE DISTANCE, in (mm) 22 (559)  
 DRY ARCING DISTANCE, in (mm) 9.5 (241)  
 NET WEIGHT, lbs (kg) 20.5 (9.3)  
 GLAZE COLOR Light Gray

APPLICABLE STANDARD : ANSI : C29.7



VISUAL AND DIMENSIONAL INSPECTION ACCORDING TO IEC 383

MATERIAL	PORCELAIN	REF.	DWG.TYPE SALES	DWN. RVS	APP.
----------	-----------	------	----------------	----------	------