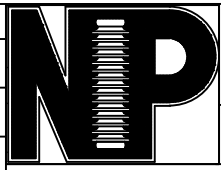
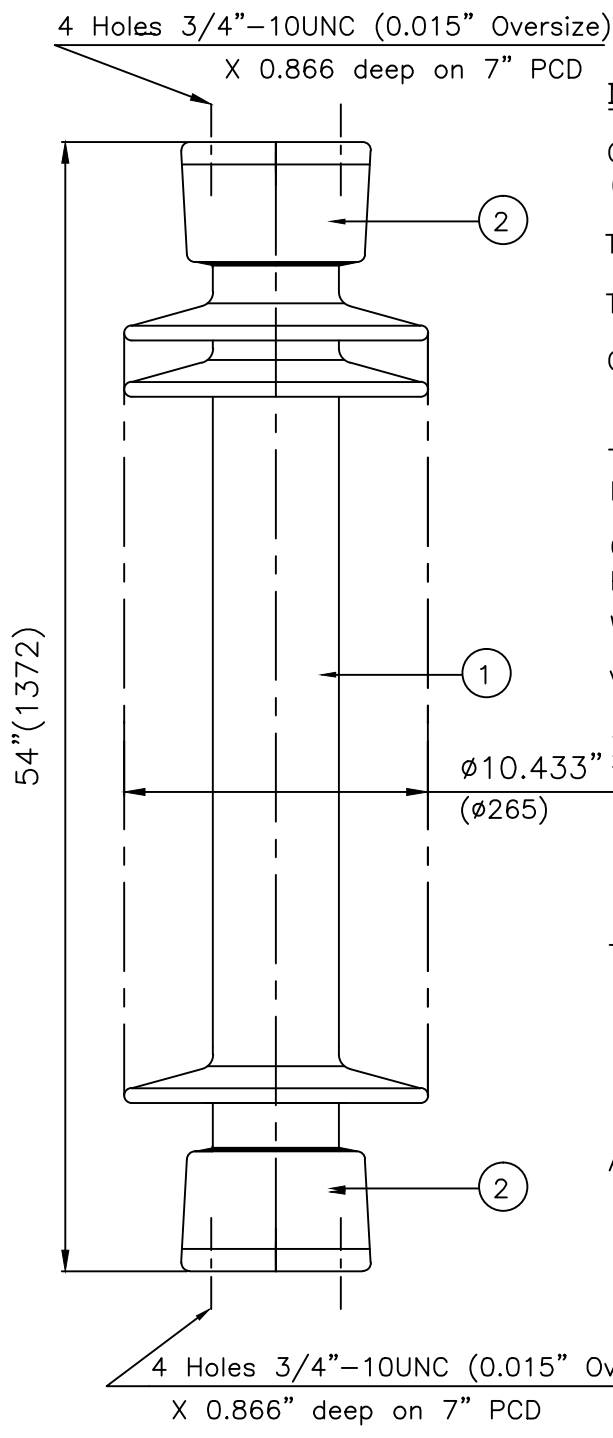


RELEASE HISTORY		
a	DRAWING/DESIGN CREATED Rev.0	12.08.2006 PG
b	DRAWING REDRAWN Rev.1	13.05.2021 RVS



 In.(mm)	PART# 47842-7001
	DRAWING NUMBER 212-C-1039
TITLE STATION POST INSULATOR-650kV BIL	
REF. TECHNICAL REFERENCE TR-	



TECHNICAL CHARACTERISTICS

MECHANICAL RATINGS

CANTILEVER STRENGTH, lbs (kN) (Upright & Underhung)	4100 (18.24)
TENSION STRENGTH, lbs (kN)	40000 (178)
TORSION STRENGTH in-lbs (kN*M)	120000 (13.56)
COMPRESSION STRENGTH lbs (kN)	120000 (534)

ELECTRICAL RATINGS

IMPULSE WITHSTAND VOLTAGE, kV	650
CRITICAL IMPULSE FLASHOVER VOLTAGE, POSITIVE, kV	710
WET POWER FREQUENCY WITHSTAND VOLTAGE, kV	275

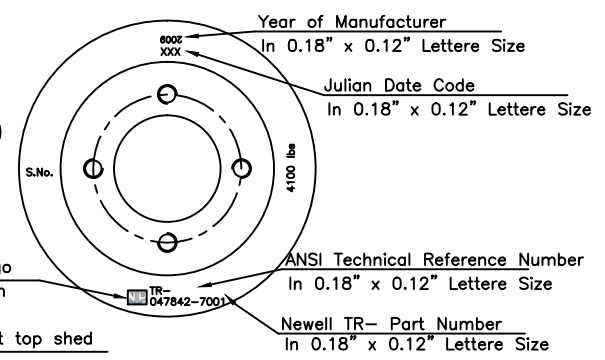
RADIO INFLUENCE VOLTAGE RATINGS

LOW FREQUENCY TEST VOLTAGE, kV	88
MAX. RIV AT 1000 kHz, μ V	200

PHYSICAL CHARACTERISTICS

MINIMUM LEAKAGE DISTANCE, in (mm)	116 (2950)
UNIT HEIGHT, in (mm)	54 (1372)
NET WEIGHT, lbs (kg)	338 (153)
GLAZE COLOR	Light Gray

APPLICABLE STANDARD: ANSI: C29.9 & 29.1
IEC:60168,273 & IS:2544, 5350



S.No.	DESCRIPTION	MATERIAL	REMARKS
2	Caps	MCI/SGI	Hot dip.galv.
1	Insulator body	Porcelain	Grey Glazed

REF.212-C-1039	DWG.TYPE SALES	DWN. RVS	APP.
----------------	----------------	----------	------