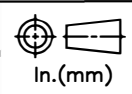


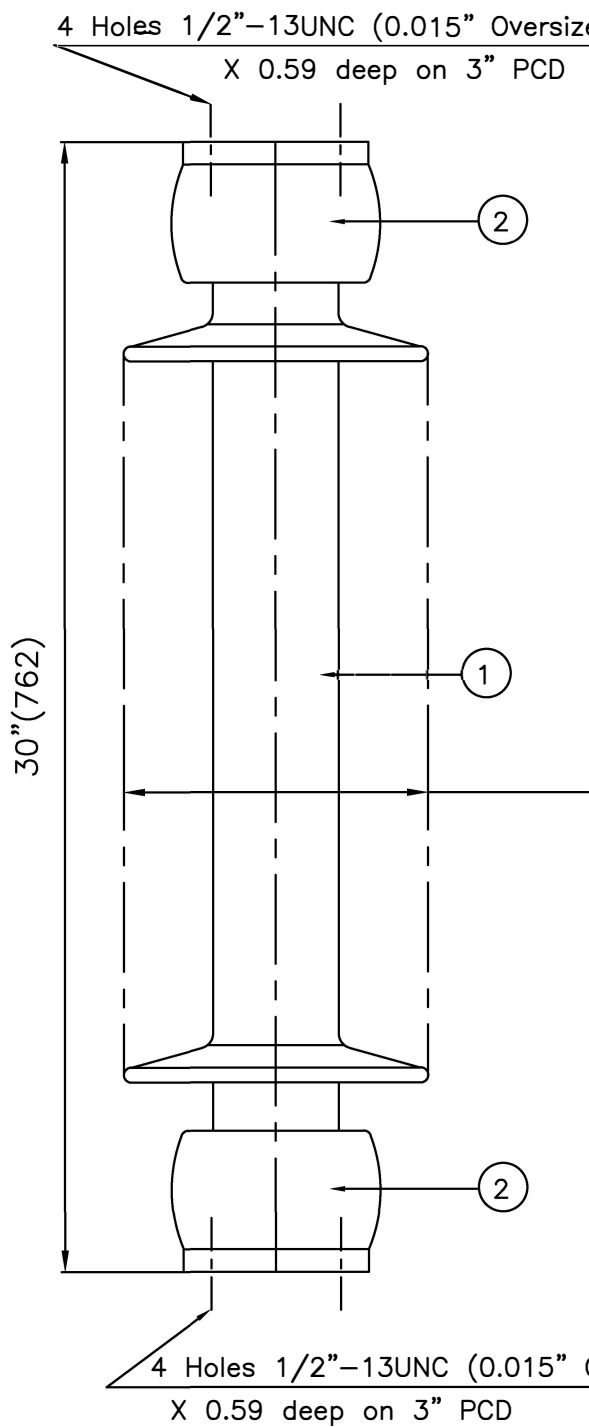
RELEASE HISTORY		
a	DRAWING/DESIGN CREATED Rev.0	04.09.1993 RKM
b	DRAWING REDRAWN Rev.1	10.03.2021 RVS



PART#NPSCG216-7001
DRAWING NUMBER 214-C-092

TITLE STATION POST INSULATOR-350kV BIL

REF. TECHNICAL REFERENCE TR-216 *Caps Painted Orange*



TECHNICAL CHARACTERISTICS

MECHANICAL RATINGS

CANTILEVER STRENGTH, lbs (kN) (Upright & Underhung)	1500 (6.7)
TENSION STRENGTH, lbs (kN)	16000 (71.2)
TORSION STRENGTH in-lbs (kN*M)	15000 (1.7)
COMPRESSION STRENGTH lbs (kN)	25000 (111)

ELECTRICAL RATINGS

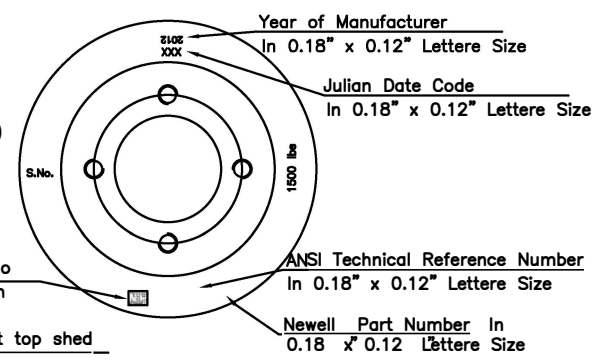
IMPULSE WITHSTAND VOLTAGE, kV	350
CRITICAL IMPULSE FLASHOVER VOLTAGE, POSITIVE, kV	390
WET POWER FREQUENCY WITHSTAND VOLTAGE, kV	145

RADIO INFLUENCE VOLTAGE RATINGS

LOW FREQUENCY TEST VOLTAGE, kV	44
MAX. RIV AT 1000 kHz, μV	200

PHYSICAL CHARACTERISTICS

MINIMUM LEAKAGE DISTANCE, in (mm)	72 (1830)
UNIT HEIGHT, in (mm)	30 (762)
NET WEIGHT, lbs (kg)	77 (35)
GLAZE COLOR	Semi-Conductive Gray
APPLICABLE STANDARD:ANSI:C29.9 & IEC:60168,273 & IS:2544, 5350	



2	Caps	MCI/SGI	Hot dip.galv.
1	Insulator body	Porcelain	Grey Glazed
S.No.	DESCRIPTION	MATERIAL	REMARKS

REF.214-C-092	DWG.TYPE SALES	DWN. RVS	APP.
---------------	----------------	----------	------