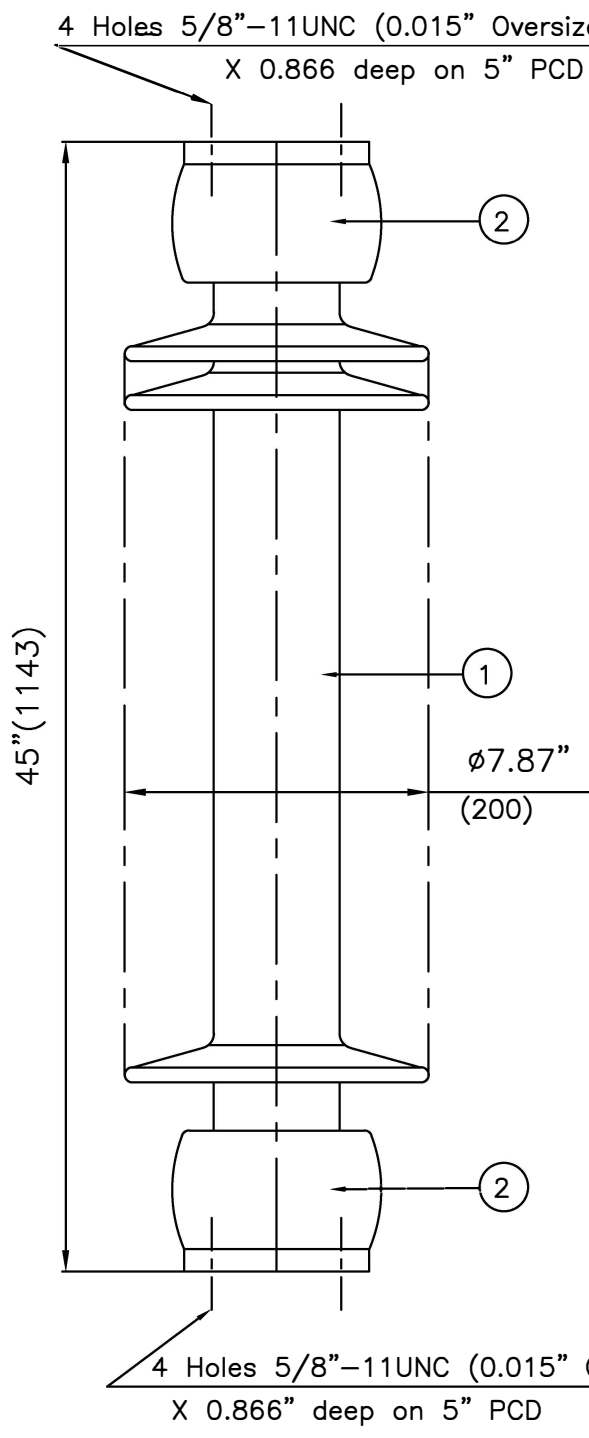


RELEASE HISTORY		
a	DRAWING/DESIGN CREATED Rev.0	08.09.2010 KN
b	DRAWING REDRAWN Rev.1	25.04.2021 RVS



 In.(mm)	<b>PART#NPSCG286-7001</b>
	DRAWING NUMBER 214-C-1439
TITLE STATION POST INSULATOR-550kV BIL	

REF. TECHNICAL REFERENCE TR-286 \*Caps Painted Orange\*



**TECHNICAL CHARACTERISTICS**

**MECHANICAL RATINGS**

CANTILEVER STRENGTH, lbs (kN) (Upright & Underhung)	1700 (7.56)
TENSION STRENGTH, lbs (kN)	20000 (89)
TORSION STRENGTH in-lbs (kN*M)	60000 (6.78)
COMPRESSION STRENGTH lbs (kN)	60000 (267)

**ELECTRICAL RATINGS**

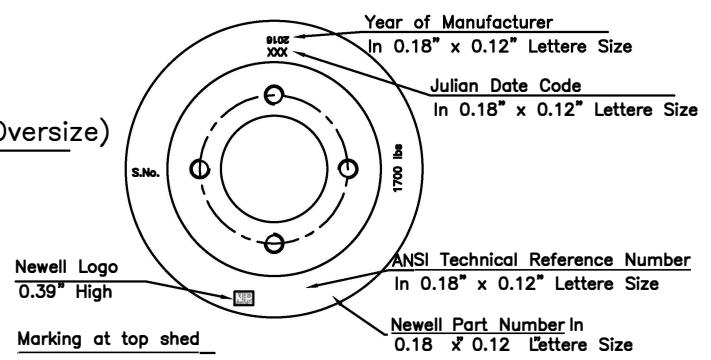
IMPULSE WITHSTAND VOLTAGE, kV	550
CRITICAL IMPULSE FLASHOVER VOLTAGE, POSITIVE, kV	610
WET POWER FREQUENCY WITHSTAND VOLTAGE, kV	230

**RADIO INFLUENCE VOLTAGE RATINGS**

LOW FREQUENCY TEST VOLTAGE, kV	73
MAX. RIV AT 1000 kHz, µV	200

**PHYSICAL CHARACTERISTICS**

MINIMUM LEAKAGE DISTANCE, in (mm)	99 (2515)
UNIT HEIGHT, in (mm)	45 (1143)
NET WEIGHT, lbs (kg)	118.8 (54)
GLAZE COLOR	Semi-Conductive Gray
APPLICABLE STANDARD:ANSI:C29.9 & IEC:60168,273 & IS:2544, 5350	



S.No.	DESCRIPTION	MATERIAL	REMARKS
2	Caps	MCI/SGI	Hot dip.galv.
1	Insulator body	Porcelain	Grey Glazed

REF.214-C-1439	DWG.TYPE SALES	DWN. RVS	APP.
----------------	----------------	----------	------